

IntePro[®]

Corrugated PP Board



INTEPLAST GROUP
WORLD OF PLASTICS
WORLD-PAK, WORLD OF GREEN PLASTICS

WEB SITE: <http://www.inteplast.com>

E-MAIL: intepro@inteplast.com

TEL: 1-800-452-2117 ext. 1

IntePro[®] sheets are the perfect substrate for a variety of construction applications. IntePro[®] can be used alone to replace plywood, or can be laminated and coated with other substrates such as aluminum, fiberglass and polyethylene creating a strong, durable sheet for use in the construction and millwork industry.

ADVANTAGE OF INTEPRO[®]

- 8 DURABLE & LIGHT WEIGHT
- 8 MOLD, INSECT AND MOISTURE RESISTANT
- 8 REUSABLE
- 8 WON'T SPLIT OR CRACK
- 8 EASY TO FABRICATE
- 8 16MM NATURAL (TRANSLUCENT) PASSED WIND ZONE 4 FOR HURRICANE WINDOW PROTECTION PANELS



New Product!

- 25mm thick corrugated board
- Only manufacture that can produce over 13mm



Concrete Forms & Tubes

- Lightweight and easy to handle during installation and removal period
- Reusable
- Waterproof



Stone Boxes

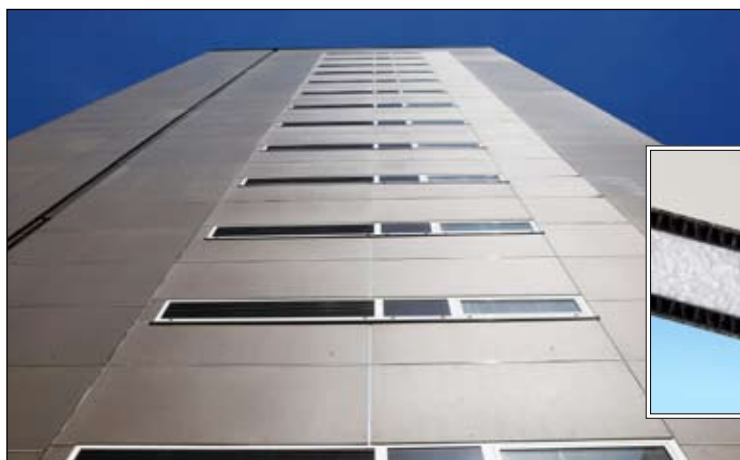
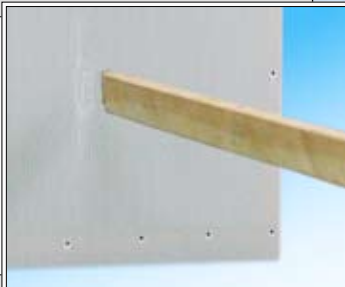
- Durable
- Waterproof
- Reusable
- Stackable
- Excellent for outdoor storage
- No wax, recyclable
- Environmentally friendly

IntePro®

Corrugated PP Board

Storm Panels

- Lightweight
- Easy to handle
- Transmits diffused light
- Will withstand hurricane force winds with proper installation



Structural Panels

- Laminated with aluminum, steel, Formica, wood
- Outdoor and indoor applications
- Buildings, pools, roofs, vehicle flooring, floor paneling

Wall Retainer

- Moisture barrier
- Reduces mold growth



SPECIFICATIONS

- **INTEPRO® PROFILES:** STANDARD FLUTE, CONICAL FLUTE, "S" FLUTE, "X" FLUTE
- **THICKNESSES:** 2MM, 3MM, 4MM, 5MM, 6MM, 7MM, 8MM, 10MM, 13MM, 16MM, 19MM, 25MM
- **STOCK SIZES:** 48" x 96"
- **CUSTOM SIZES AND THICKNESSES ARE AVAILABLE UPON REQUEST (MAX WIDTH 104")**
- **SPECIAL SIZES FOR 16MM STORM PANELS:** 96"x 80", 96"x 108", 96"x 120"



INTEPLAST GROUP

WORLD-PAK, WORLD OF GREEN PLASTICS

OFFICE: 9 Peach Tree Hill Rd., Livingston, NJ 07039
PLANT: 101 Inteplast Blvd., Lolita, TX 77971

TEL: 1-800-452-2117 ext. 1
FAX: 1-800-889-8807
E-MAIL: intepro@inteplast.com
WEB SITE: <http://www.inteplast.com>