



IntePro[®]

PRODUCT GUIDE



GRAPHIC ARTS • PACKAGING • CONSTRUCTION • AUTOMOTIVE • MATERIAL HANDLING • AND MORE

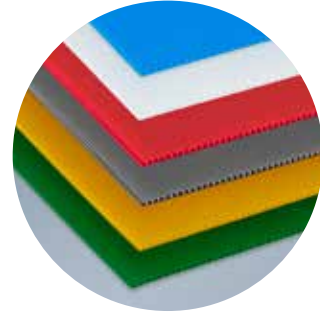
IntePro®

The Industry Leader of Corrugated Plastics

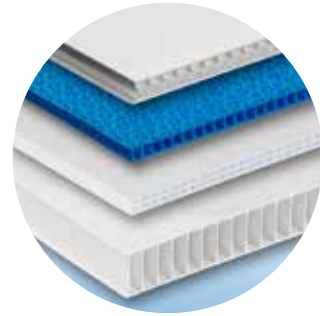


IntePro® is sturdy corrugated plastic sheeting extruded from either polypropylene or high density polyethylene. It is more durable than corrugated fiberboard, but lighter in weight than wood and solid PVC sheets. Its fluted ribs support both surfaces, making IntePro® lightweight, tough and impact resistant.

It is available with a thickness that range from 2 to 25mm and in a variety of colors. IntePro® boards are ideal for widespread applications and industries, such as signage, automotive, construction, shelters, converting, lamination, industrial, agricultural packaging, reusable boxes and shelf bins.



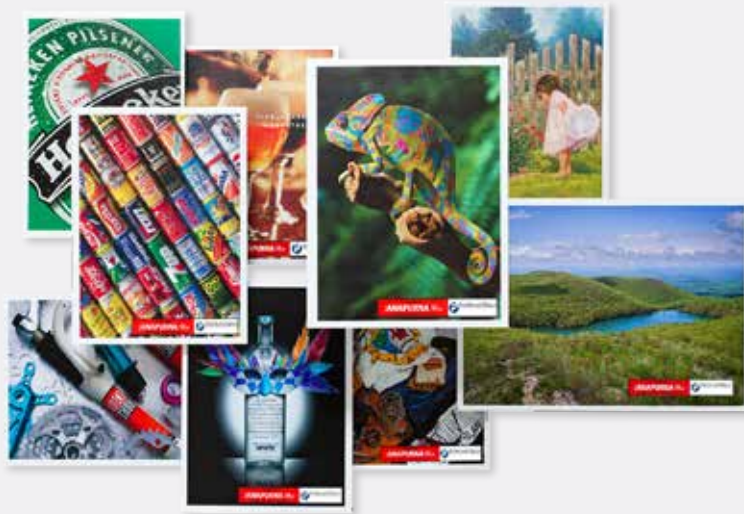
Regular IntePro®
in different colors



X Flute, Triple Wall
25mm gauge IntePro®



IntePro® Applications GRAPHIC ARTS



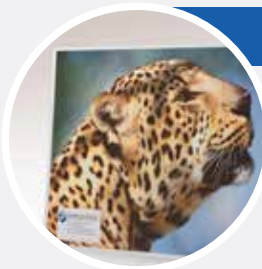
- Superior print quality
- Excellent ink adhesion
- Outdoor sustainability
- Waterproof
- Chemical resistant

Graphic Arts



IntePro® plastic sheeting is ideal for all indoor and outdoor graphic art signage applications including election signs, pole signs, real estate signs, digital printing display, advertisement, lawn decorations, POP displays, bus / truck signs and agricultural seed signs.

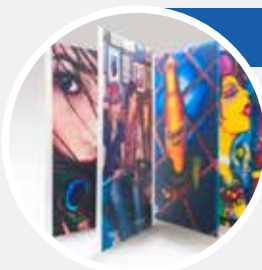
UltraSmooth™



Our patented UltraSmooth™ corrugated plastic has a unique surface which makes it optimal for screen printing. These plastic sheets offer unmatched print quality, higher output and lower ink consumption.

U.S. Patent No. 6,759,114 B2

SuperClear™



SuperClear™ IntePro® substantially enhances the transparency of the IntePro® board. It is perfect for backlighting or any prints needed to be visible on both sides.

IntePro® TITAN

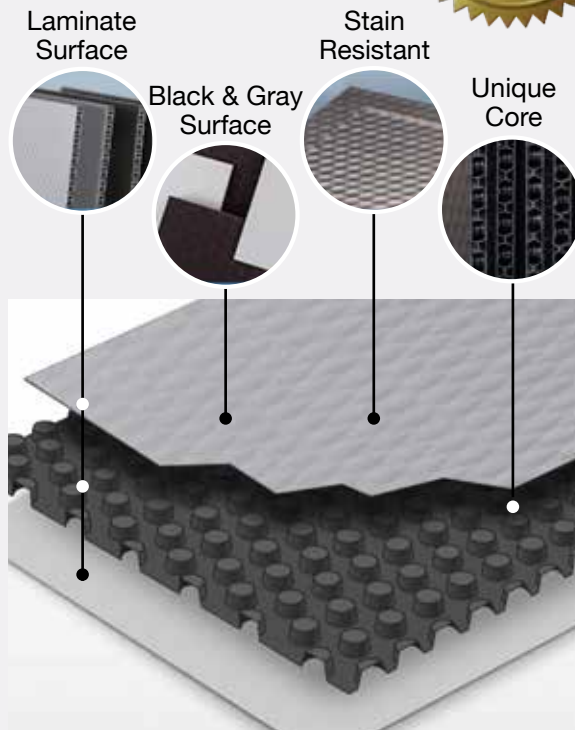
U.S. Patent No. US_D772437_S



The Evolution of Corrugated Plastics

IntePro® TITAN is a unique multilayer panel that is remarkably lightweight yet exceptionally rigid and impact resistant. Made from 100% polypropylene, it is easily fabricated on traditional fluted plastic converting equipment. IntePro® TITAN can be die-cut, creased, sonic welded and heat bonded.

- Durable: Best-in-class strength to weight ratio
- Rugged: Superior crush, puncture and impact resistance
- Versatile: Applications in almost any industry
- Sustainable: Low impact manufacturing process & recyclable
- Sustainable: 100% recyclable at end-of-use cycle
- Omni-directional, Nominal thickness: 3mm, 5mm, 10mm



Packaging Industry



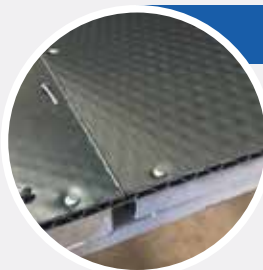
- Bulk shipping containers & sleeve packs
- Agricultural bulk bins
- Dry flowable product bins
- Boxes, totes
- Dunnage
- Pallet sleeves
- Layer pads

Automotive / Transportation



- Spare tire covers and vehicle load floors
- Auto interior components, dunnage & automotive totes
- Returnable parts packaging
- Truck/trailer side walls and door panels
- Reduced weight components for CAFE compliance

Industrial / Construction



- Composite architectural panels
- Lightweight structures
- Temporary construction environments
- Concrete forms
- Architectural panels
- Plywood, pressed fiberboard

IntePro® Applications PACKAGING



- Reusable
- Waterproof
- Durable
- Recyclable
- Lightweight

Produce Box



IntePro® sheets are ideal for agricultural packaging and storage. Our products have been frequently used for fruit and vegetable packaging, picking totes, seafood boxes and more. These lightweight boxes support easier use and handling, cheaper shipping and storage, they are even water and chemical resistant allowing for longer storage in controlled rooms.

Material Handling



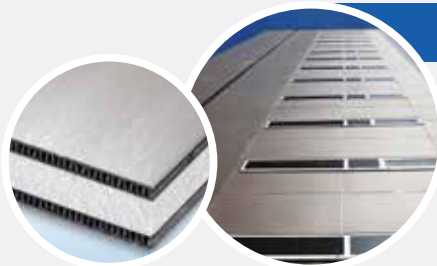
IntePro® can be utilized for a variety of material handling applications. Our durable plastic boxes are used for DC-to-store transport, break-pack shipping applications, etc. Other applications include nature stone boxes, cultured veneer, stone and brick companies. We also manufacture rolled material, which replaces the traditional wood lagging to protect industrial wire and cable.

Converting



IntePro® corrugated plastic sheets can be converted by a variety of methods including sonic welding, heat seal, and die cut. Our plastic sheets can also be glued, scored, or ultrasonic welded. Inteplast's dedicated technicians use state-of-the-art technology to design boxes based on custom specifications for general or unique applications.

Lamination



IntePro® can be laminated to different substrates such as metal, wood and other plastics. IntePro® sheets are easy to laminate on wooden or concrete countertops and wall linings in both luxury boats and RVs. They have also been utilized for pool linings to offer a more cost effective and lightweight solution. These sheets can be used for a variety of applications, including architectural exterior walls, interior ceiling panels, plus marine and automotive design.

IntePro® Applications CONSTRUCTION



IntePro® temporary disaster shelter

- Reusable
- Waterproof
- Durable
- Recyclable
- Lightweight

Roof & Wall Batten



IntePro® Roof Battens are light, durable and easy to handle. Our waterproof sheets help eliminate water ponding by allowing water to run freely down the roof through the fluted channels. The sheets are not as porous as wood so they don't absorb moisture, and they are shipped in easy-to-handle, two square bundles.

Soil Erosion Panel



IntePro® boards can be used for soil retention next to foundations and support structures caused by stormwater runoff. It is made of strong, rigid plastic, and is impervious to both soil and water. Its thin, lightweight design allows for easy handling and storage savings. It is proven to outperform precast blocks, fiberboard, or lumber.

Hurricane Panel



Durable 16mm IntePro® Hurricane Storm Panels are lightweight, easy to install, and will not splinter like plywood. The waterproof panels will not warp or change in any way due to moisture. They also transmit diffused light unlike other alternatives.

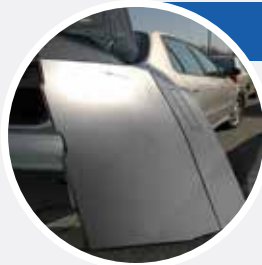
IntePro® Hurricane Storm Panel passed the criteria for both ASTM E-1886-2 & ASTM E1996-02.

IntePro® Applications AUTO INTERIOR



- Durable
- Reduce weight
- Easy to laminate
- Better adhesion

Automotive



IntePro® is used in the automotive industry for laminated carpet liners, baffles, back seat liners, and truck liners. For years we have worked with converters & laminators to provide unique products for those and other automotive applications. It is also used frequently in recreational vehicles, mobile homes, medical vehicles and many standard car models.



Inteplast specializes in the unique manufacturing of corrugated plastic to meet different auto specifications. Waterproof and lightweight, IntePro®'s durability and versatility makes it an ideal product. We offer lighter weight alternatives that both increase fuel efficiency, and allow better carpet adhesion. Many manufacturers have already specified in the IntePro® brand name, but now even more are discovering the merits of using IntePro® for improving their automobiles.

Originally established in 1991 as Inteplast Corporation, our company was developed on a large scale in order to competitively produce quality products and provide value to our customers. Our plants are the largest of their kind and contain the finest equipment available in the world. All our products are made exclusively in the USA.



Headquarters, Livingston NJ



Manufacturing Plant, Lolita TX



INTEPLAST GROUP

IntePro® Marketing
P: 800.452.2117 x 1 | F: 800.889.8807
E-mail: intepro@inteplast.com